



XTranslator guide on EDI X12 to XML translation

Copyright © 2005-2018 Etasoft Inc.
Main website <http://www.etasoft.com>
XTranslator website <http://www.xtranslator.com>

Introduction 2

How to define EDI X12 layout 2

How to define XML layout..... 7

How to map input to output 10

How to filter or route specific EDI X12 data 14

Introduction

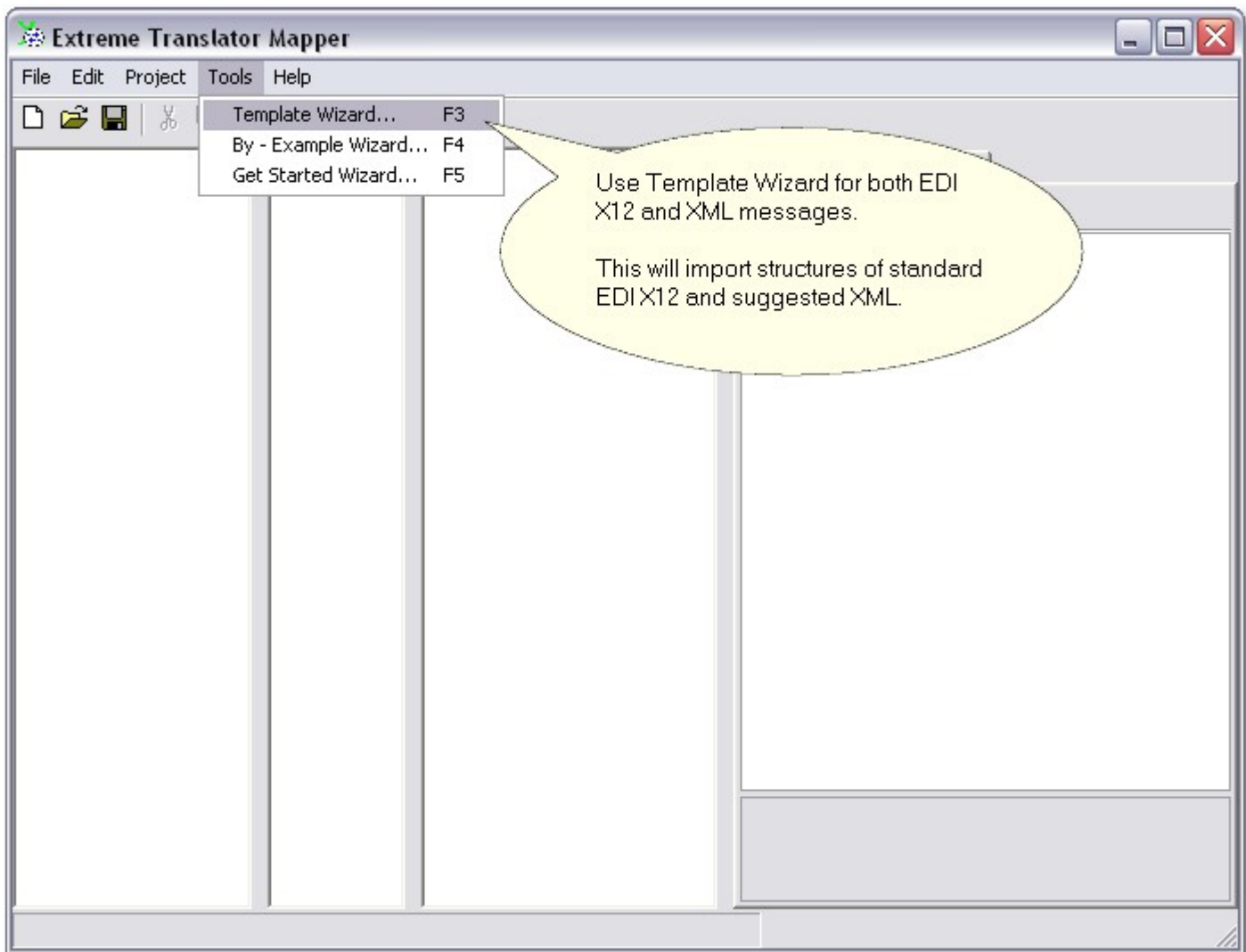
This guide will explain how to use XTranslator Map Editor to map and translate EDI X12 to XML. While this guide uses EDI X12 835 message type basic mapping principles are the same and apply to most EDI X12 to XML maps. Template Wizard will be used twice first to import EDI X12 template and then to import XML template.

Once mapping is done you do not have to recreate it again simply save it into the file with extension *.xmp. You can run map files using other utilities that come in the package (read User's Manual about other utility programs).

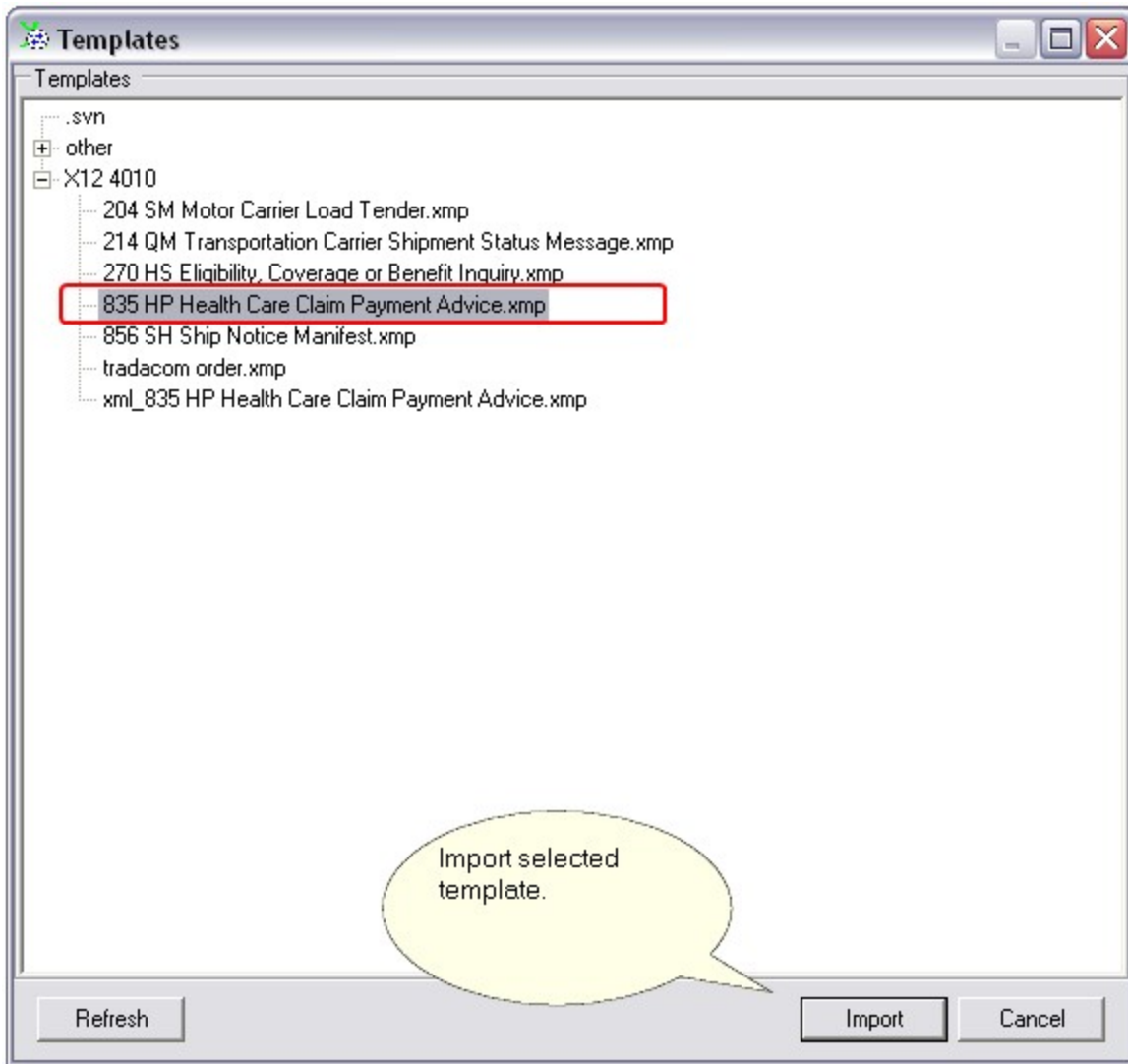
This document comes with complete map in a file with extension xmp. Please open and examine it as you read this document.

How to define EDI X12 layout

XTranslator comes with number of templates for EDI X12. You can import them via Template Wizard.

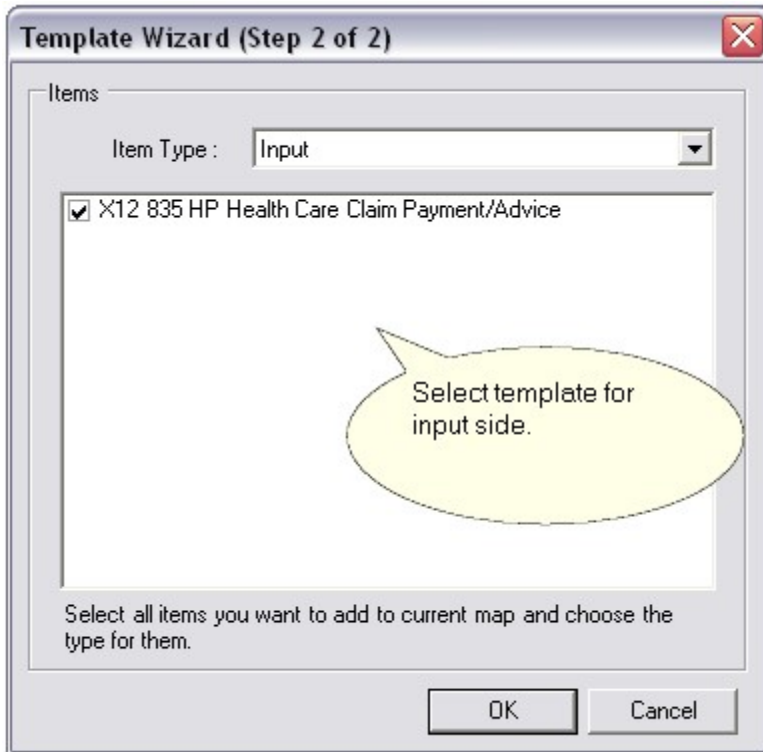


You can open Template Wizard via Tools->Template Wizard menu in the Map Editor. This tool simply loads all the templates available in your \templates directory under translator installation directory.

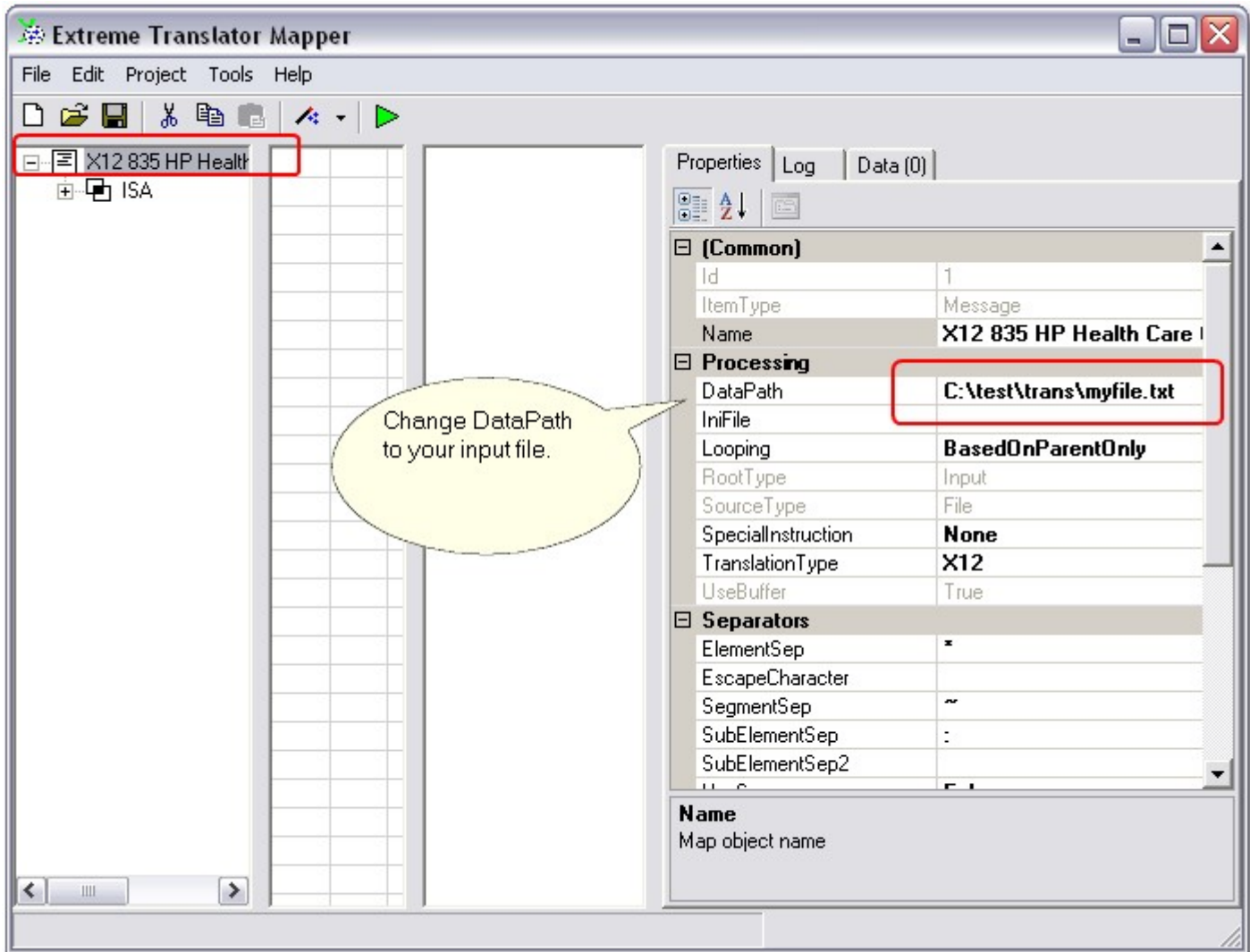


In the Template Wizard EDI X12 messages are grouped by their EDI standard release version number. In this case we pick X12 835 release 4010.

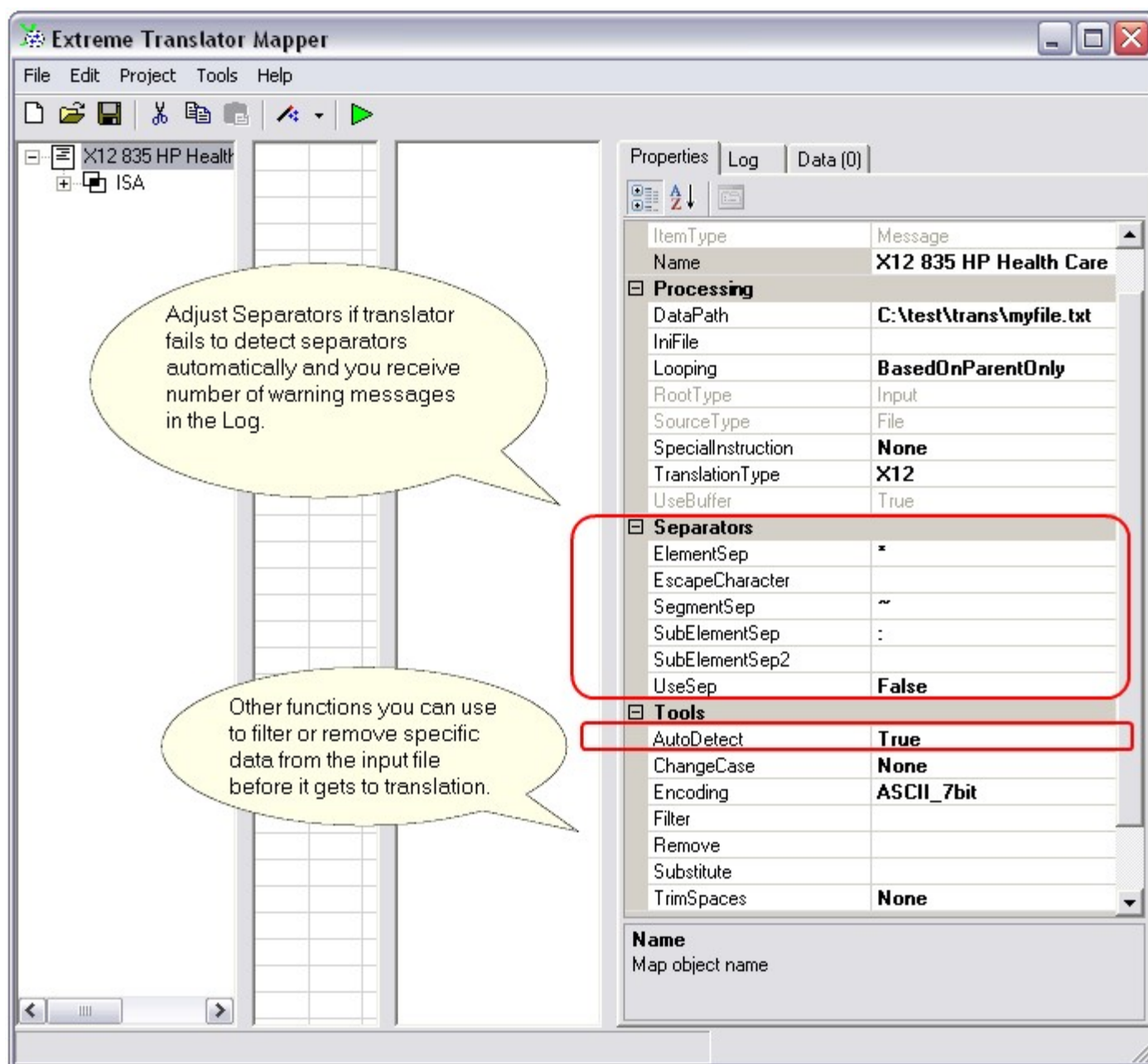
Most popular releases are 4010 and 5010. 4010 was the first Year2000 compliant release with four digit dates containing century.



You can import templates into input or output side. In this example we are mapping from EDI X12, so it is our input. However if we would be mapping to EDI X12 our "Item Type" would have to be set to Output.



Once template is imported change DataPath property to point to your input file. You can also use wildcards to specify file groups or entire directory (check User's Manual for wildcard options in DataPath property).

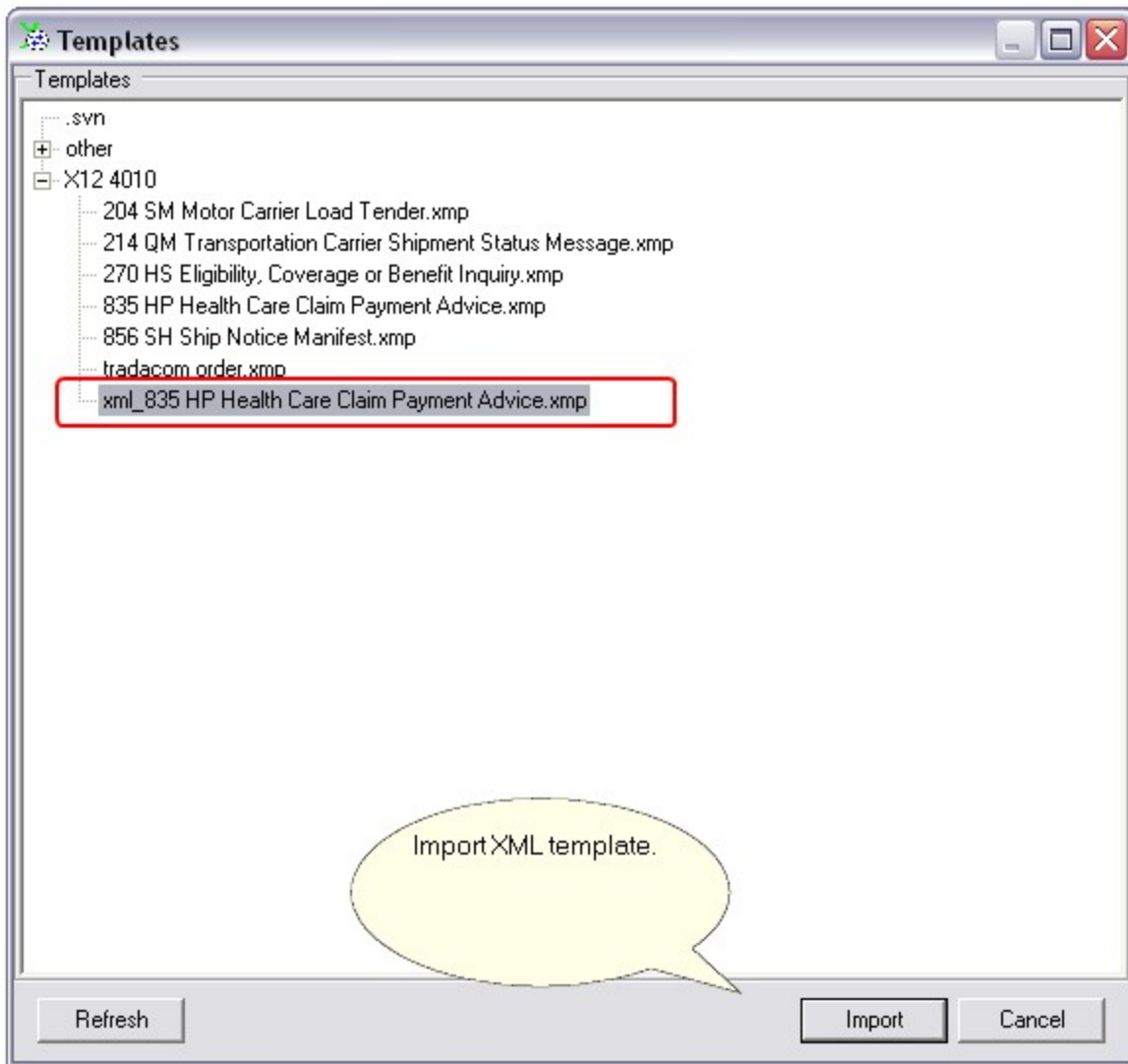


There are number of properties you can adjust at the message/file level. Group of separators are one of them. Translator tries to auto-detect separators if AutoDetect property is set to true. However auto-detect may fail if your EDI X12 does not have mandatory ISA segment, or it contains invalid characters. In those specific cases you may need to set separators manually.

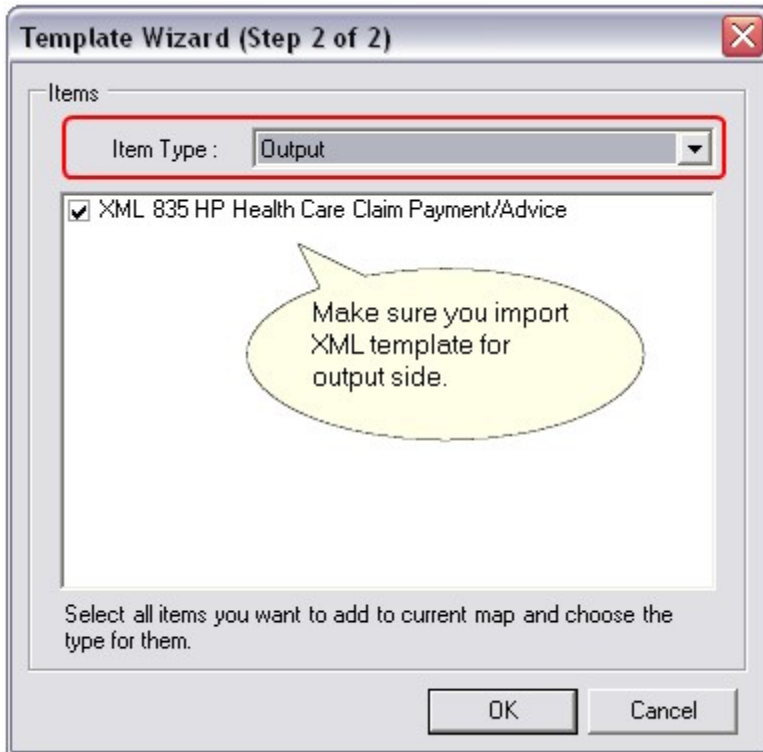
Also there are number of useful properties available at the message/file level. Example: Filter property can be used to filter specific characters from the input before it gets to translator. So if you enter #13#10 in the Filter property it will take out all the carriage return and line feed characters that are coming in the file. Codes 13 and 10 are decimal values of carriage return and line feed (check User's Manual for use of other properties such as Remove, Substitute and TrimSpaces).

How to define XML layout

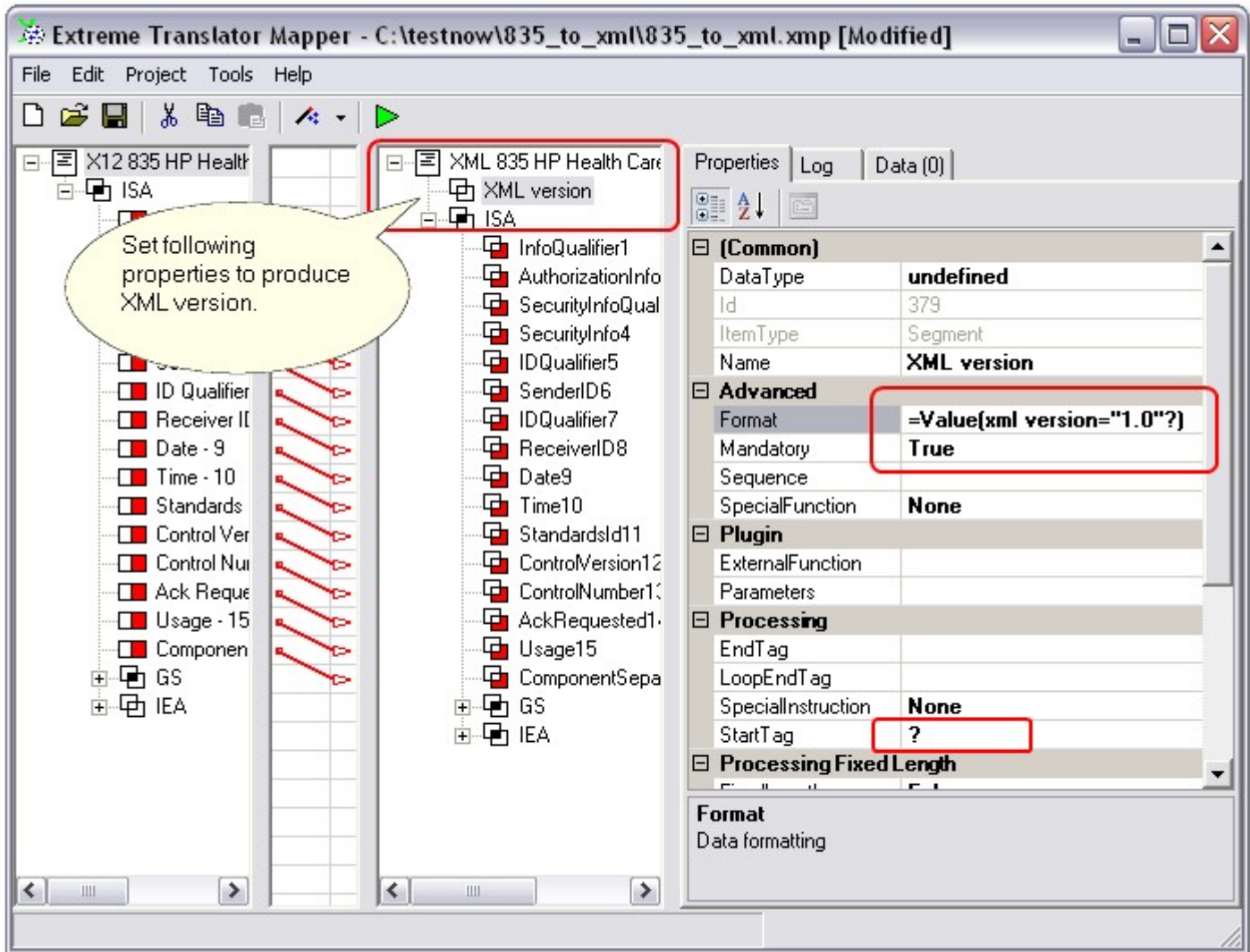
In this guide we will map to XML that extracts all of EDI X12 data from the file. Most of EDI X12 messages have already pre-built XML templates that list all the X12 segments and elements as XML tags. You can download all of XML templates from <http://www.xtranslator.com/prod/xmltemplates.exe> (it is self-extract zip file). Once you install XML templates they will appear in the Template Wizard prefixed with "xml_".



Import XML template in the map. If you recently installed XML templates you may need to press Refresh button to get them listed in the Template Wizard.



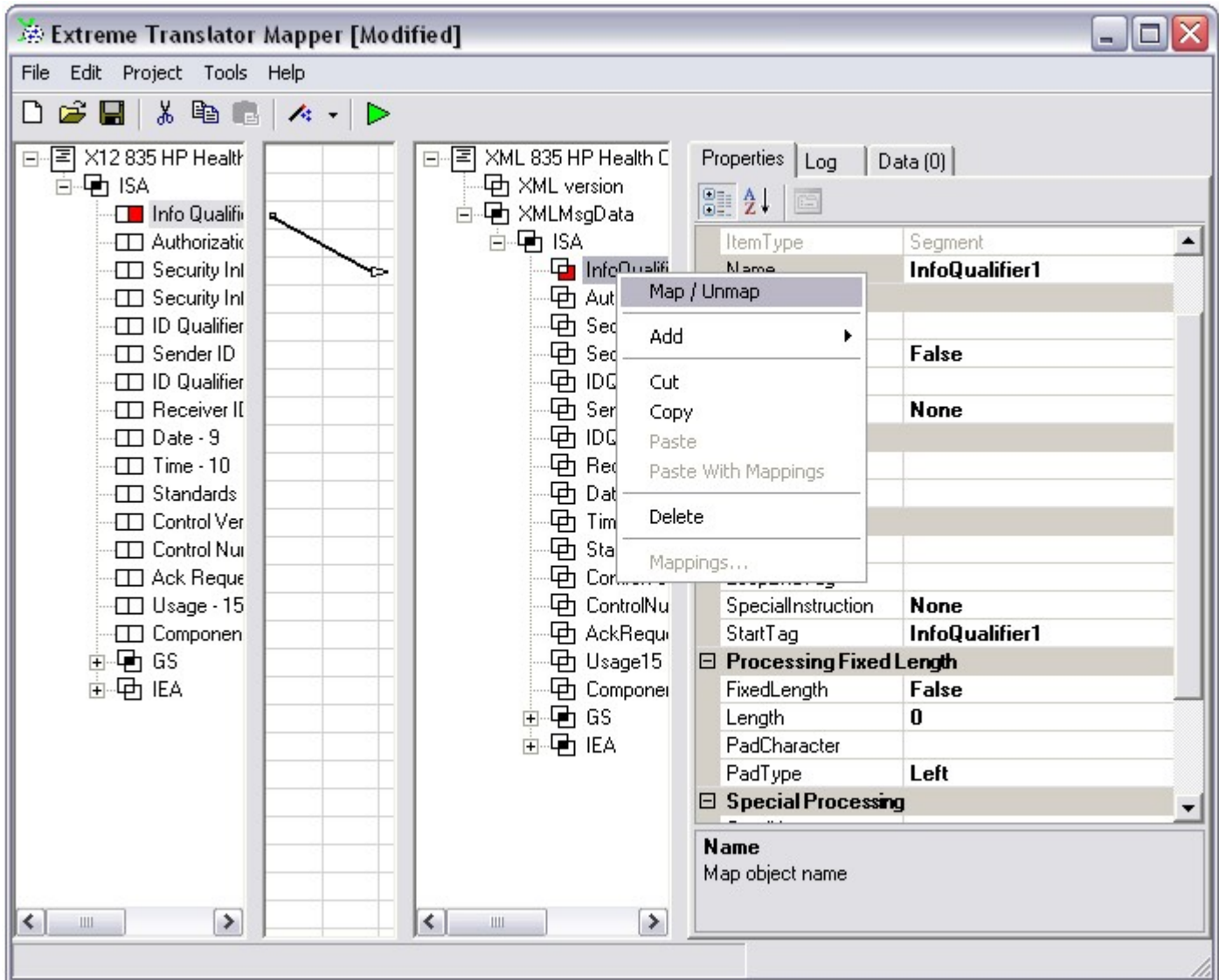
Make sure you import XML template into the output side.



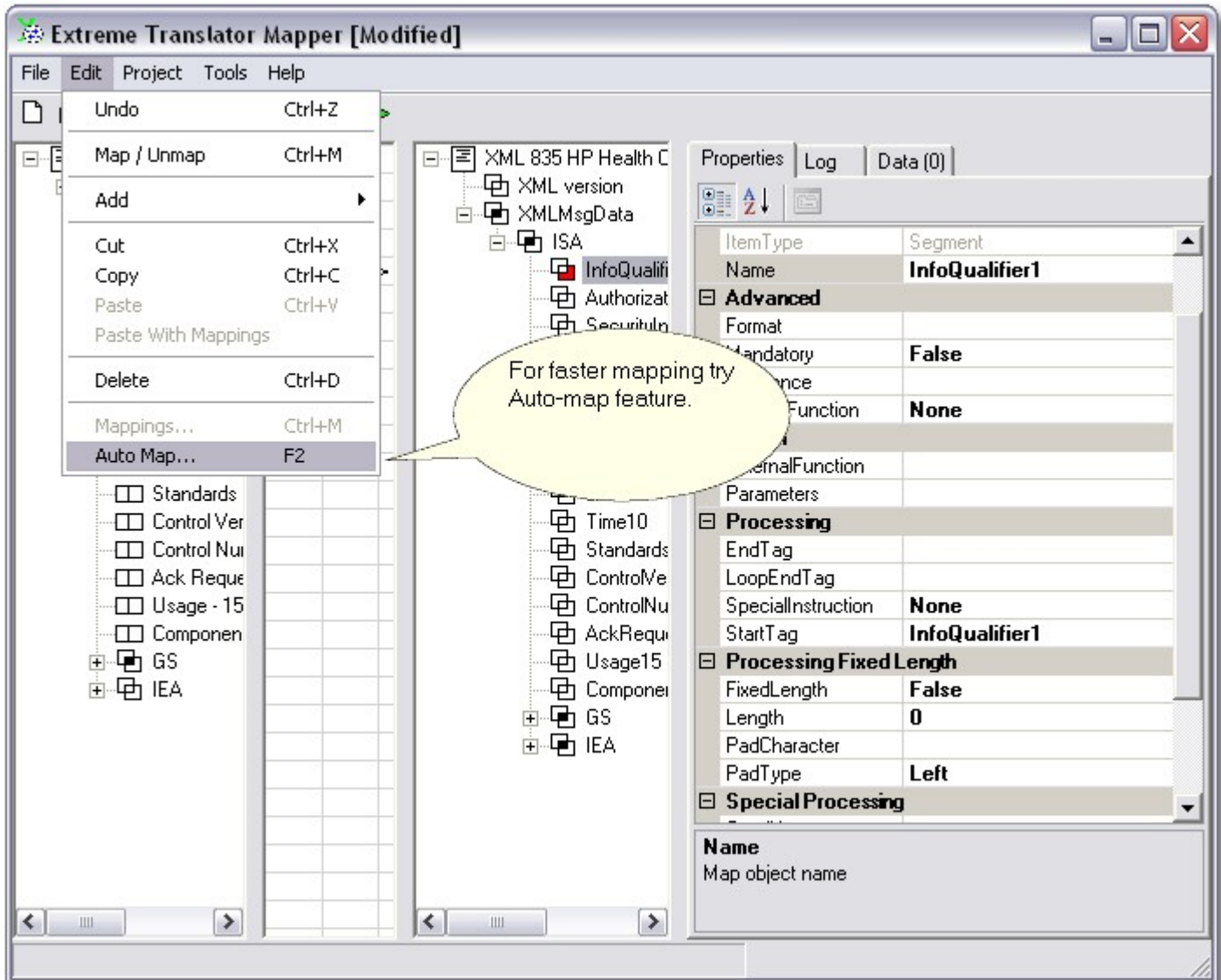
You can change xml version information if you click on "XML version" segment. If you do not need xml version produced, simply delete this segment.

How to map input to output

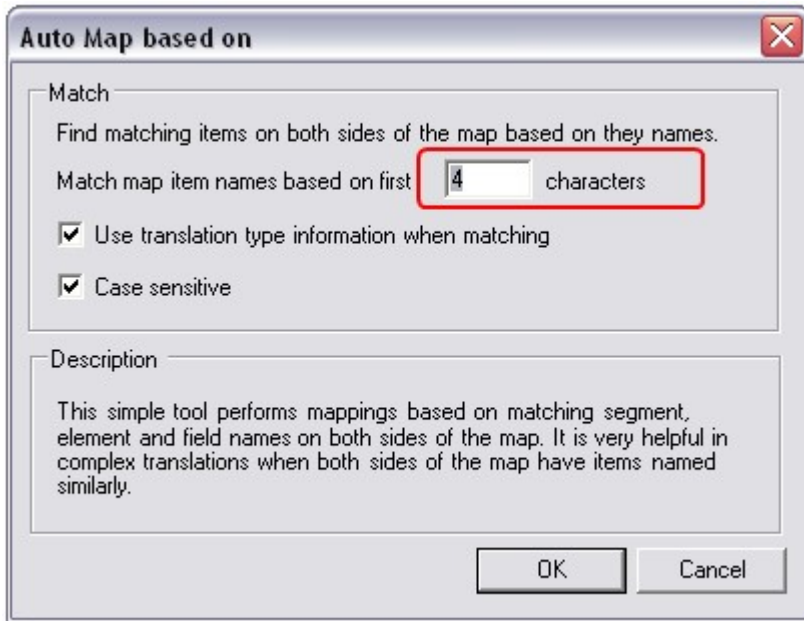
There are few ways how to create mappings: manual and automated. Automated mapping is limited as it tries to match names on the input to the names on the output side and create mappings based on the match. If input and output names do not match automated mapping will not produce the result or produce only partial results. In most cases at least some manual mapping has to be done.



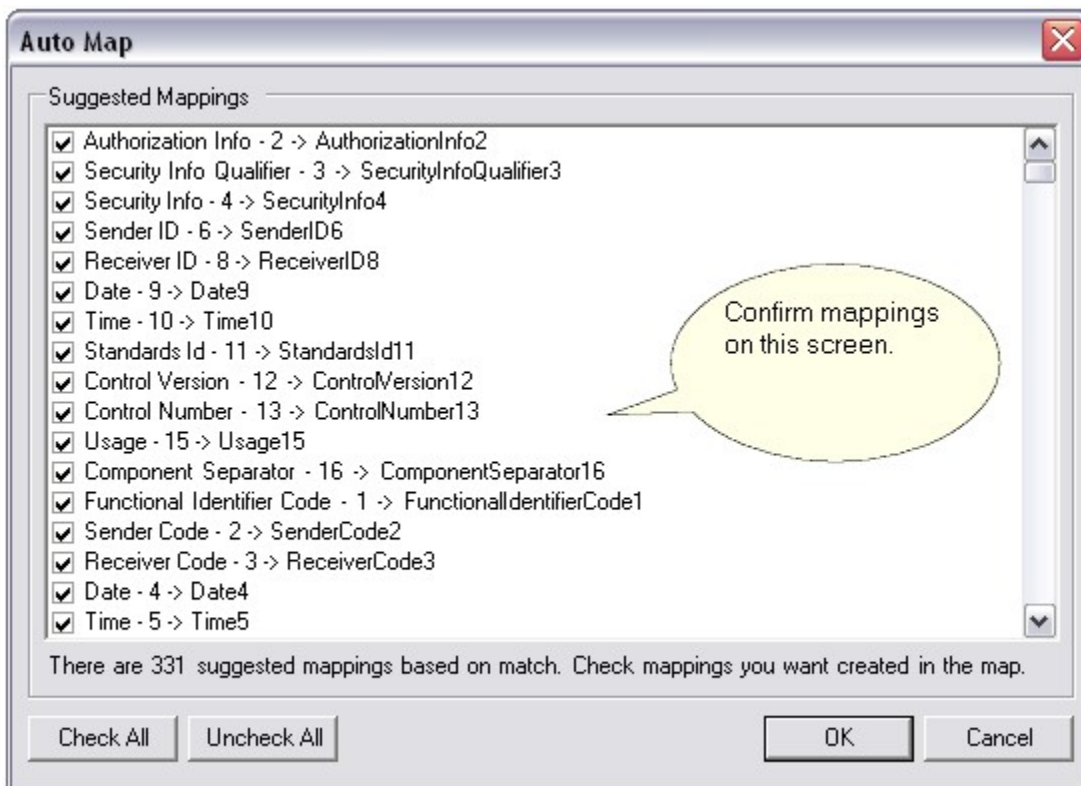
You can perform manual mapping by clicking on the input side, then clicking on the output side, then right clicking and pressing Map/Unmap item in pop-up menu.



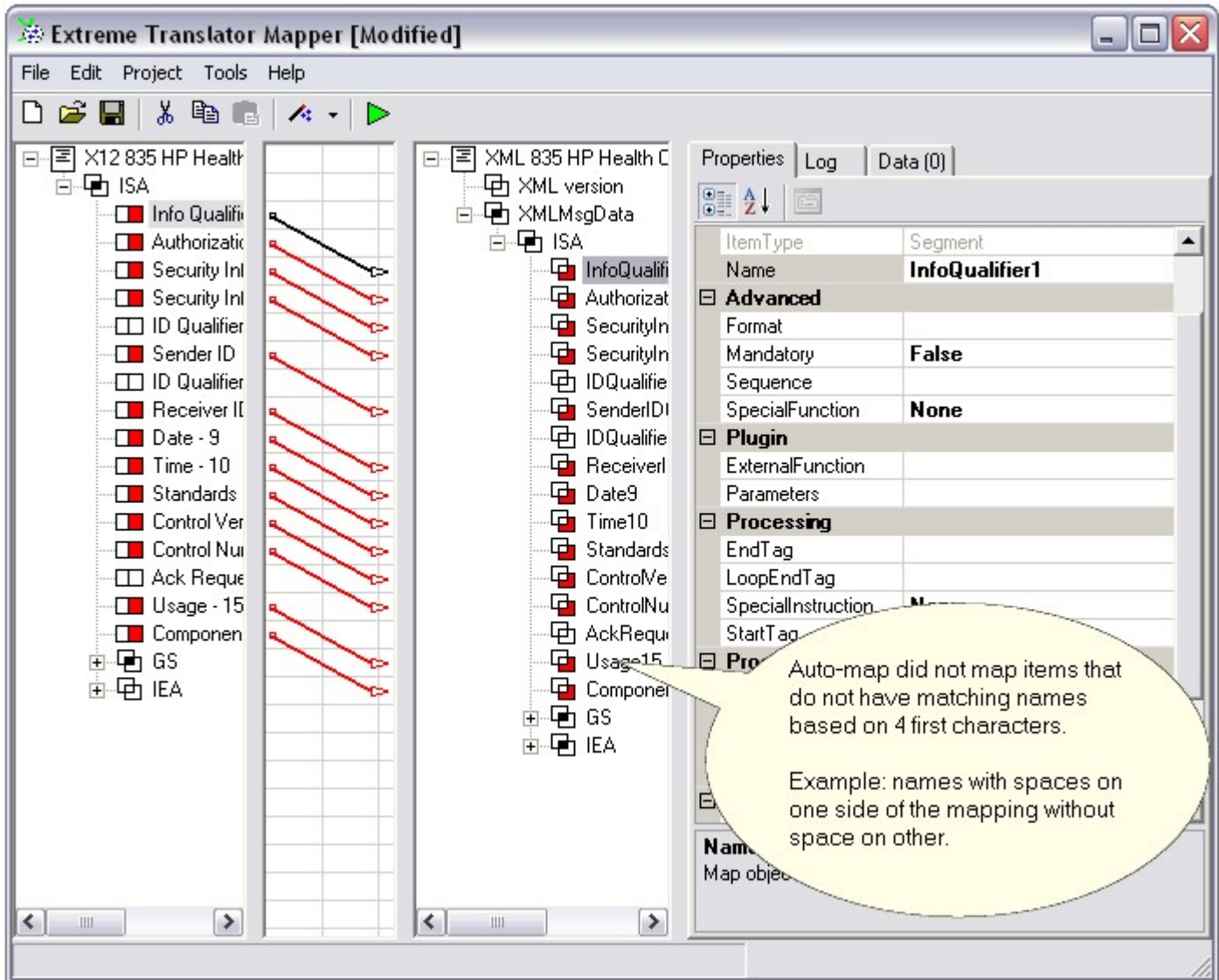
You can access auto-map feature via menu Edit->Auto Map.



Auto-map will try to match input side names to output side.



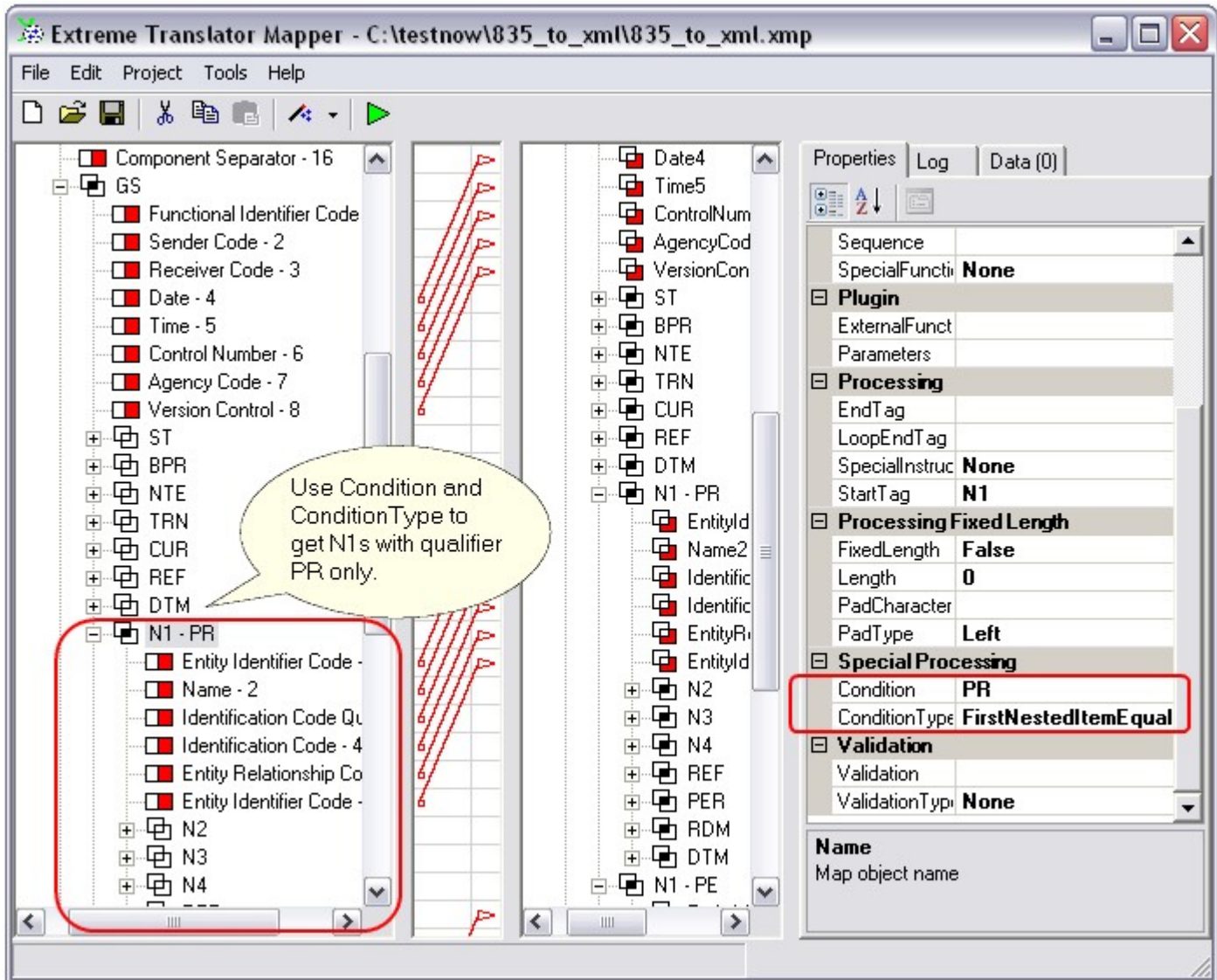
This is result of them matching. You can confirm match and have it mapped or cancel (uncheck) it.



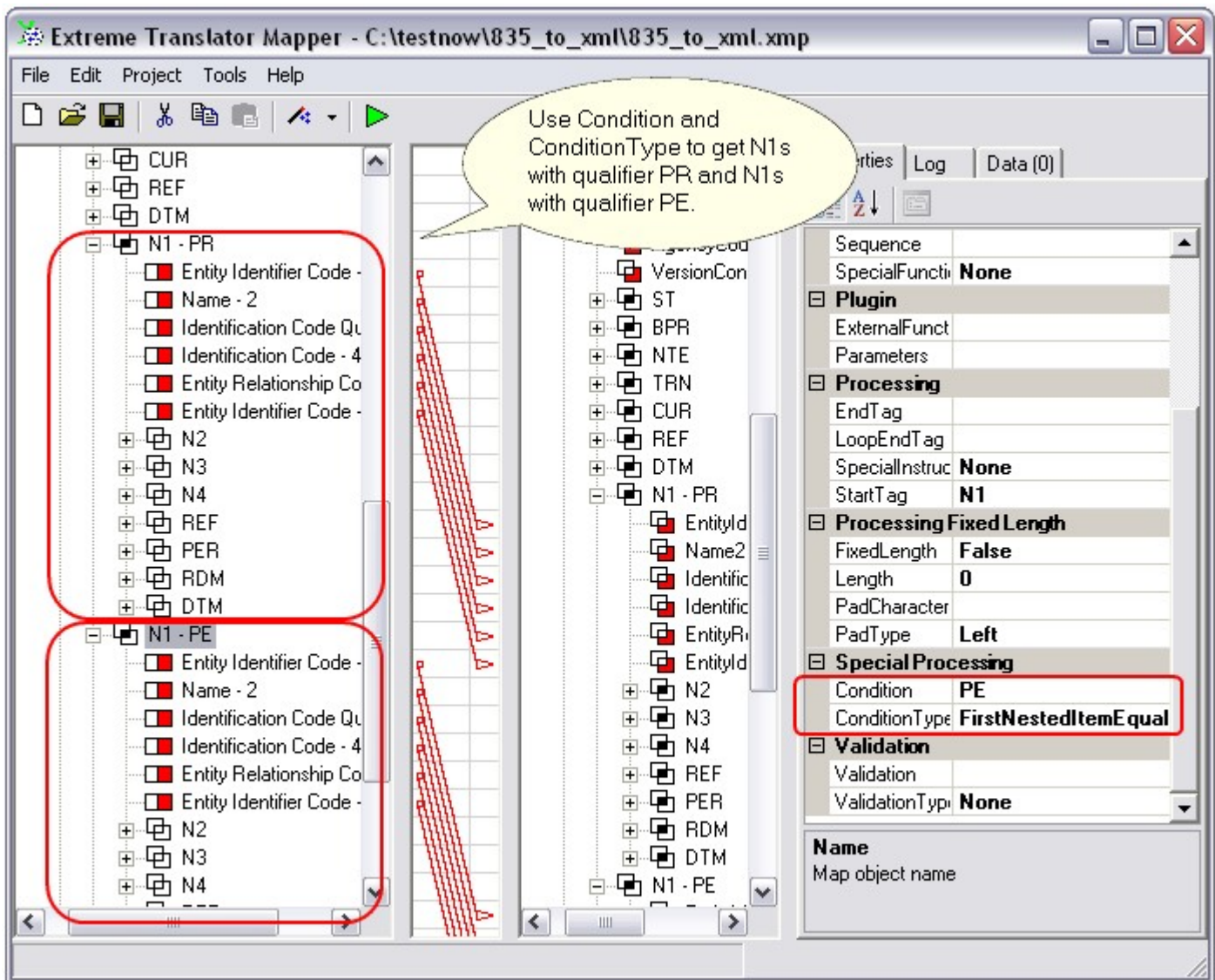
Auto-map has limited matching ability and may not map all of the input to output. In those cases you would need to perform manual mapping.

How to filter or route specific EDI X12 data

You can use Condition and ConditionType properties to filter specific EDI X12 segments or route them to other XML tags based on values in EDI X12 elements. This feature is mostly used to perform certain translations based on so-called EDI qualifier values. Qualifiers are specific elements in EDI X12 segment that tell us what that segment or group of segments actually mean. Example: N1 segment usually has element #1 as a qualifier, and for example if element #1 contains "PR" that means N1 and segments below (N2, N3, N4, etc.) contain payer address information. Qualifier defines what type of address is in N1, N2, N3, N4 segment group (loop).



Qualifiers are used extensively in EDI X12. In cases when you need to filter specific segment or segment group, set Condition and ConditionType properties on that segment. Example: for N1 with qualifier PR in element #1 set Condition to PR and ConditionType to FirstNestedItemEqualsTo.



There might be cases when you need to extract different groups of segments based on qualifier values. You can still use Condition and ConditionType the same way. Only difference this time you would need a few sets of the same segments each with different value in Condition property. Simply Copy & Paste one segment group after the other (right click on the segment, click Copy, click on the parent segment and then Paste). This way you will have two identical segments or segment groups. Set Condition and ConditionType on each one of them.