

Etasoft – eValidator version 1.x

Copyright © 2011 Etasoft Inc.
Main website <http://www.etasoft.com>
Product website <http://www.xtranslator.com>

- Purpose..... 2**
- Requirements..... 2**
- Package Details..... 2**
- Licensing..... 2**
- Main Program..... 3**
- Batch Command Line Processing..... 4**
- What Are Invalid EDI Files? 6**
- Results 6**
- Performance..... 7**
- Developer SDK 7**
- Technical Support 7**

Purpose

eValidator is validation toolset for EDI X12 files. You can validate EDI X12 files and produce EDI 997, TA1, 999, HTML, XML and CSV files with validation results.

Supported EDI standards include EDI X12 4010, 4020, 4030, 4040, 4050, 4060, 5010, 5020 and 5030. Product supports all HIPAA message types. Other EDI standards such as EDI X12 6010 have also been tested and should work as well.

Requirements

<i>Minimum Requirements</i>	
Software	Windows 2000/XP/Vista/Server 2003/7
Hardware	Pentium 1GHz, RAM 256Mbt
<i>Recommended</i>	
Software	Windows XP Pro
Hardware	Pentium 1.5GHz, RAM 512Mbt

Package Details

Package comes as setup program for Windows based personal computers. Software product does not install any separate runtimes or systems and does not require them to be preinstalled. Example: software does not use .NET or Java runtimes and does not need them preinstalled.

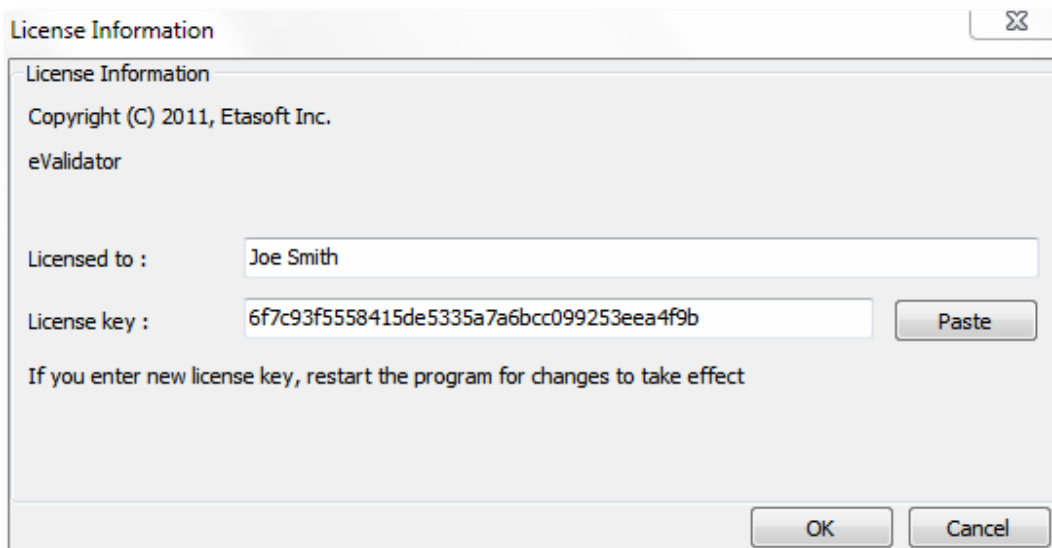
We recommend to always use setup program to install product on new computer.

Once installed product creates following important files:

1. evalidator.exe – main program.
2. evalidcmd.exe – command line batch type validation runner.
3. evalidator.pdf – Users Manual documentation.

Licensing

Default package installation comes as time limited trial evaluation license. After fixed number of days starting from the day of the first use, trial evaluation license will expire and most of software features will become disabled. If you like the product and purchase it, you will receive permanent license key. This new key must be entered in License dialog:



License key should be entered via Help->License menu in eValidator main screen. Both "License To" and "License key" fields are required.

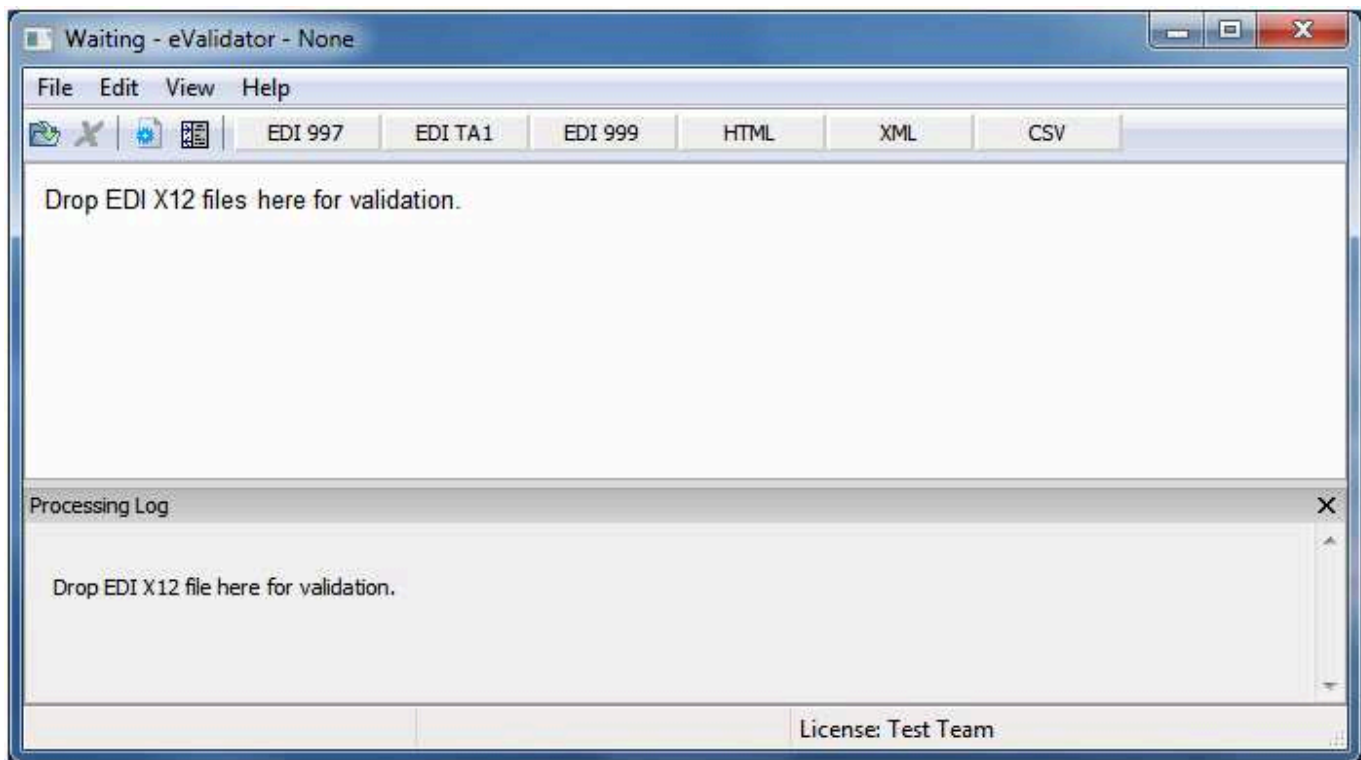
If you let trial version to expire this will eventually stop software from processing data. Once you decide to purchase the product, you will receive new permanent license key you can enter in the License screen. This new key will unlock the product without a need to reinstall it.

If you like the product and decide to purchase it, you will receive new permanent license key that will never expire. Simply enter or copy and paste new license key in Help->License screen, and restart the program. Same permanent license key can be used to run validations via command line. However you need special developer license to integrate validator runtime into your programs and use Developer SDK.

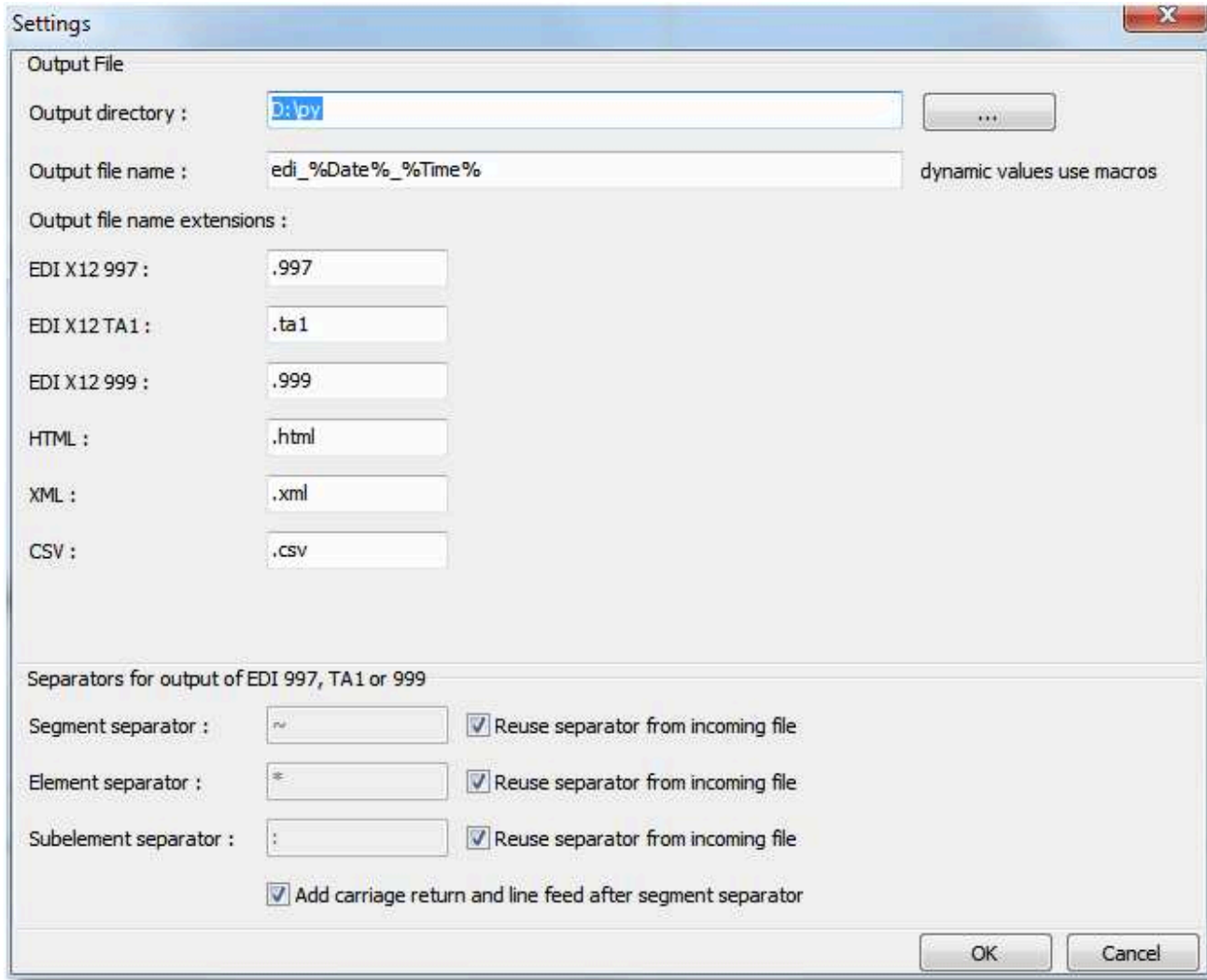
Main Program

You can validate and create output EDI 997, TA, 999, HTML, XML or CSV files with validation results using main program. You can use "File->Open And Validate" menu or Open toolbar button to open EDI file.

eValidator creates output file based on rules you have setup in settings screen.



There is main eValidator screen. You can simply drop your EDI files on it. Main screen consist of panel with validation results and processing log displayed at the bottom.



There are few options available when producing output for validation results. You can change them using Settings screen.

Output file name is created by replacing macros with dynamic values and appending extension for specific output format. There are few macros available:

%Date% - creates date in format YYYYMMDD

%Time% - creates time in format hhmmss-nnnnnn (hours_minutes_seconds-microseconds)

%ShortDate% - creates short date in format YYMMDD

%ShortTime% - creates short time in format hhmmss (no microseconds)

For EDI 997, TA1 and 999 output formats eValidator needs to know EDI separators to use to produce those EDI X12 formats. You can enter fixed separator values or reuse separators from incoming file.

Batch Command Line Processing

You can run eValidator as command line batch job. But first you need to execute eValidator GUI at least once. It will register license key and EDI standards database.

There is how to run command line batch validation:

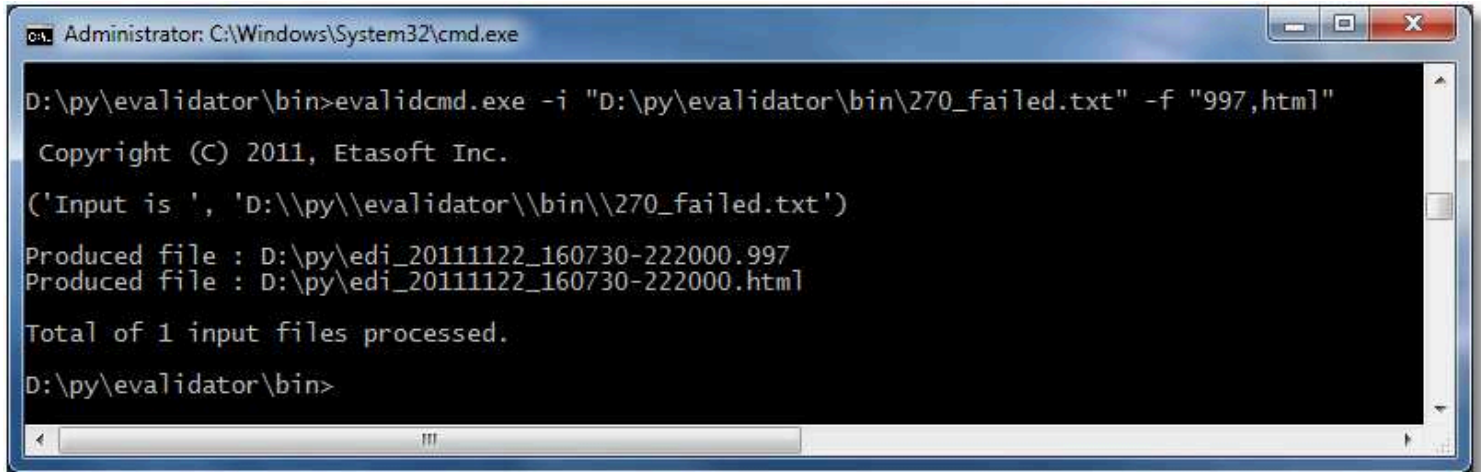
```
"C:\full_path_to_executable\evalidcmd.exe" -i "C:\test\input270.txt" -f "997,ta1,999,html,xml,csv"
```

Here "-i" followed by space and input file name in double quotes is input file. It main contain wildcards (see examples below).

Option "-f" followed by space and double quotes contains all output formats we want to produce separated by commas.

Output file name will be automatically created based on settings set via Settings screen.

Command line runner returns 0 if processing run without errors. Non-zero exit code indicates error.



```

Administrator: C:\Windows\System32\cmd.exe

D:\py\evaluator\bin>evalidcmd.exe -i "D:\py\evaluator\bin\270_failed.txt" -f "997,html"

Copyright (C) 2011, Etasoft Inc.

('Input is ', 'D:\py\evaluator\bin\270_failed.txt')

Produced file : D:\py\edi_20111122_160730-222000.997
Produced file : D:\py\edi_20111122_160730-222000.html

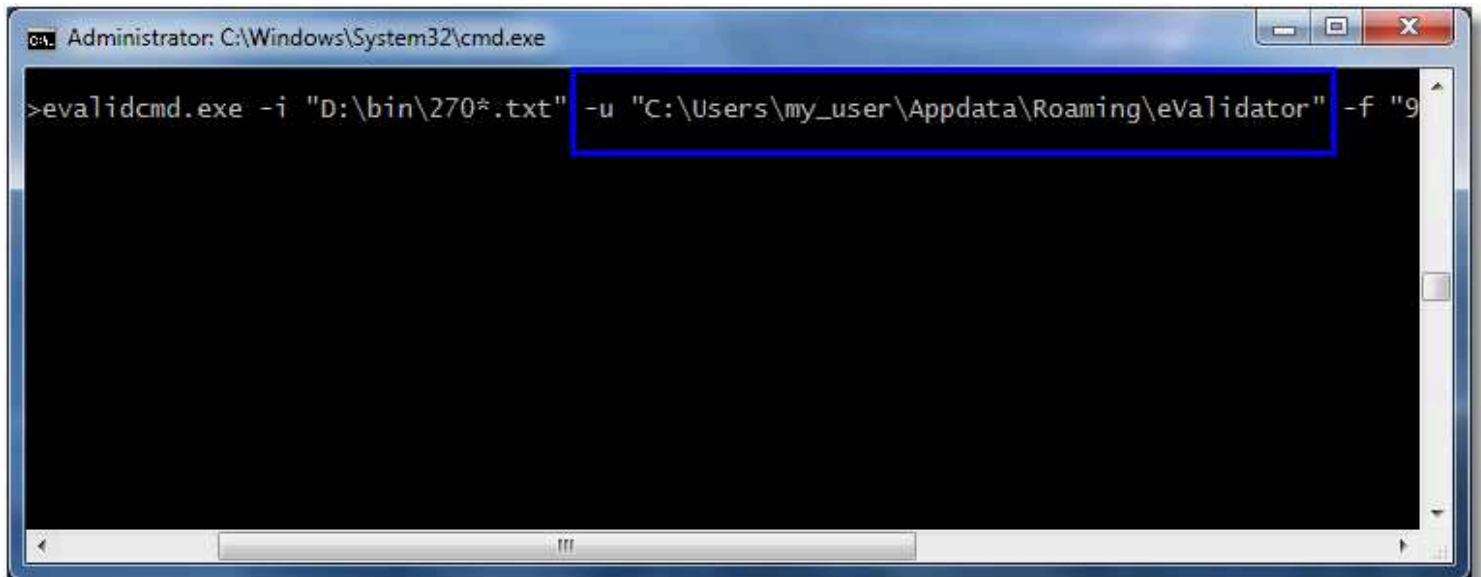
Total of 1 input files processed.

D:\py\evaluator\bin>

```

There is command line execution in action.

On some installations command line runner can not find settings set via main eValidator GUI and will give you "Not licensed" error. In that case you need to pass path where settings are into command line runner using `-u` parameter. Parameter `-u` takes directory where eValidator has EDI Standards database and "settings.json" files installed. You can find this directory on most computers by simply typing `echo %AppData%` in the command line. Environment variable `%AppData%` + subfolder "eValidator" should give you string you need to type for parameter `-u`.



```

Administrator: C:\Windows\System32\cmd.exe

>evalidcmd.exe -i "D:\bin\270*.txt" -u "C:\Users\my_user\AppData\Roaming\evaluator" -f "9

```

Pass command line `-u` option that points to settings set via main eValidator GUI. This is only required if command line runner can not find settings set via eValidator GUI.

```

Administrator: C:\Windows\System32\cmd.exe
D:\py\evaluator\bin>evalidcmd.exe -i "D:\py\evaluator\bin\270*.txt" -f "997,html"
Copyright (C) 2011, Etasoft Inc.
('Input is ', 'D:\py\evaluator\bin\270_failed.txt')
Produced file : D:\py\edi_20111122_160923-386000.997
Produced file : D:\py\edi_20111122_160923-386000.html
Total of 1 input files processed.
D:\py\evaluator\bin>

```

Use wildcards to process multiple files in one directory. You can use various wildcards such as "*" for all files or "*.edi" for all EDI files with extension ".edi".

eValidator command line runner returns 0 (zero) if there are no errors during processing. Any other return value indicates error.

What Are Invalid EDI Files?

Once you open EDI file in some text editor like Notepad, it looks cryptic. However all valid EDI X12 files have same properties:

1. They all start with three letters: "ISA"
2. After 103 characters there is word "GS". Sometimes "GS" is on the second line. If "GS" is on the second line then there might be only 102 characters between "ISA" and "GS".

eValidator reads and breaks down EDI files using these two points above. Most common scenarios why eValidator might not be able to process and validate the file:

1. That is not an EDI X12 file. Period. It is flat file, XML or scanned print image form or something else but EDI file.
2. If you copy and paste EDI file from Internet Browser window in most cases resulting EDI file will not be valid anymore. This is due to how spaces are displayed in the Browsers. Instead of 103 characters between ISA and GS you might end up having much less.
3. Usually EDI files are sent over secure connections using encryption/decryption communications. Sometimes not just communications but EDI files are encrypted themselves. Encryption leaves ISA/GS part valid but all segments in the file unreadable. Unless EDI file is decrypted eValidator will not be able to read it correctly.
4. Some EDI files come from mainframe computer systems. Occasionally they are formatted into columns of 80 characters long. Extra carriage return and line feed characters break segments into multiple lines making EDI file invalid. Those files can not be processed.

In those cases when file is totally invalid eValidator might not be able to produce EDI 997 or 999 output since transaction level of the file is unreadable.

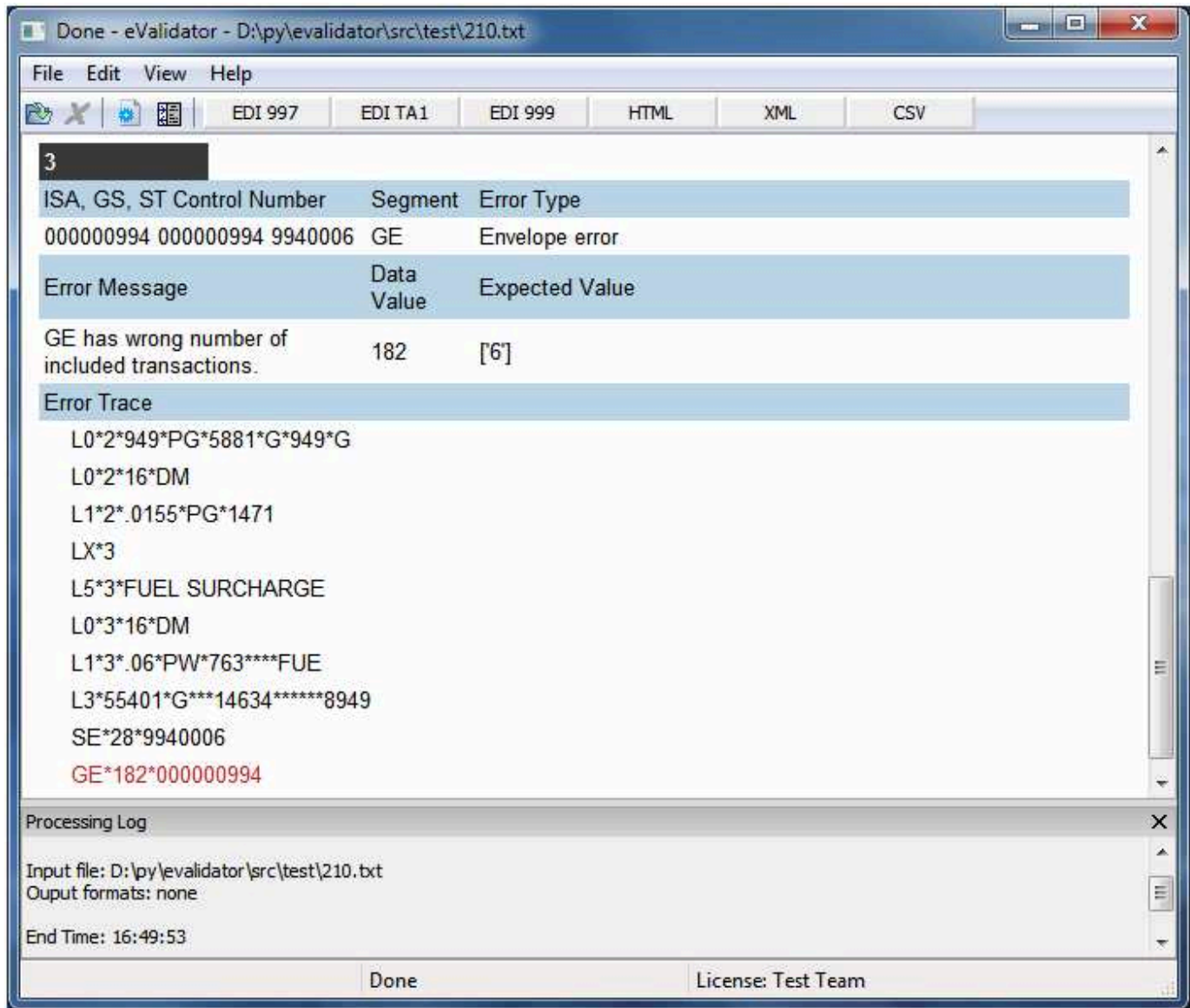
Results

eValidator produces printable reports in HTML format. You can open HTML file in your Internet browser or any other program that displays HTML and print it.

Report contains following information:

1. Reported error number. Simple running count of errors displayed as white text in the back background.
2. ISA, GS, ST control numbers. Errors in GS segments may not contain ST control number and errors in ISA segments may not contain both GS and ST control numbers.
3. Segment with error.
4. Error type is usually one of about 10 different error types that eValidator produces.
5. Error message is text with description of the error.
6. Data value is actual incoming EDI data for the element or subelement with error.

7. Expected value is actual value or one of the values from the list of values eValidator has expected in that element or subelement.
8. Error trace is list of 10 segments with segment in error. Segment with error is last in error trace and is displayed in red.



Performance

eValidator reads and parses EDI files in computer memory. That puts certain limits on how big input EDI files it can process.

Developer SDK

Look under DeveloperSDK subfolder below eValidator installation main folder.

Technical Support

Please contact technical support if you have any questions or concerns. Contact information is listed on the product and company websites.